

INVACARE® MATRX®
SEATING SERIES
PRODUCT GUIDE



Invacare® Matrx® Seating and Positioning is an established global leader, committed to product innovation, high quality standards and superior product performance. As the world of seating evolves, the Invacare Matrx Seating Series continues to exceed customer expectations.



INVACARE® MATRIX®

TABLE OF CONTENTS

Pediatric

Cushions

| | |
|----------------------|---|
| PS Cushion | 3 |
| Kid*ab*ra Vi Cushion | 3 |

Backs

| | |
|-----------|---|
| Mini Back | 3 |
|-----------|---|

Accessories

| | |
|---------------|---|
| Elan Headrest | 3 |
|---------------|---|

Standard

Cushions

| | |
|----------------|---|
| Libra™ | 4 |
| Libra™ Fit Kit | 4 |
| Vi | 4 |
| PS | 4 |
| Options | 5 |
| General Use | 5 |

Backs

| | |
|-------------|-----|
| Elite™TR | 6 |
| Elite™ | 6 |
| Elite™ Deep | 6 |
| PB | 6 |
| PB Deep | 6 |
| Hardware | 7 |
| Options | 7 |
| Accessories | 8/9 |
| General Use | 4 |

Bariatric

Cushions

| | |
|--|----|
| Libra™ Heavy-Duty | 10 |
| Libra™ Fit Kit | 10 |
| Vi Heavy-Duty | 10 |
| Flovair™ Heavy-Duty Gentle/Max Contour | 10 |
| PS Heavy-Duty | 10 |
| Stabilite™ Heavy-Duty | 10 |

Backs

| | |
|------------------------|----|
| Elite™TR Heavy-Duty | 11 |
| Elite™ Heavy-Duty | 11 |
| Elite™ Deep Heavy-Duty | 11 |
| PB Heavy-Duty | 11 |
| PB Deep Heavy-Duty | 11 |

High Performance

| | |
|----------|----|
| MX2 Back | 13 |
|----------|----|

Accessories

| | |
|---------------------------------|----|
| Elan Headrest | 9 |
| Arm Pads/Straps/Lap Belts/Trays | 13 |

Quick Product Reference

| | |
|-------------------------|-------|
| Quick Product Reference | 14/15 |
|-------------------------|-------|



INVACARE® MATRIX®

FABRIC OPTIONS*

*Note: Some options may be custom

INVACARE® MATRX® BACKS & CUSHIONS



Mini Back

Width: 10", 11", 12", 13", 14"

Height: 7", 10", 12", 14"

Weight Capacity: 150 lb.

Contour Depth: 3"

Fabric Options: Kid*ab*ra Meshtex (shown);
Blizzard Blue, Pink Lollipop and Black Startex

Standard Hardware: Mini-Set Mounting
Hardware (Quick release latch for easy removal/
portability; Fits 1", 7/8" and 3/4" diameter canes;
allows back angle/ depth adjustment with child
seated in wheelchair)

Options: Mini Swing-away Laterals, Chest
Harness Interface



Pink Lollipop
Startex



Blizzard Blue
Startex



Kid*ab*ra
Meshtex



Black
Startex

**Note: Some options may be custom*



Mini-Set Mounting Hardware



Mini Swing-away Laterals



Chest Harness Interface



PS Pediatric Cushion

Width: 10" - 14"

Depth: *10", 12", 14", 16"

* available for 10" W cushions only

Weight Capacity: 150 lb.

Fabric Options: Kid*ab*ra Meshtex (shown);
Blizzard Blue, Pink Lollipop and Black Startex

Options: Custom Modifications,
Cushion Rigidizer, Pelvic Obliquity Kit



Kid*ab*ra Vi Cushion

Width: 12", 14"

Depth: 12", 14"

Weight Capacity: 150 lb.

Cover Options: Kid*ab*ra Meshtex (shown), Black
Meshtex

Options: Custom Modifications, Drop Base,
Cushion Rigidizer, Pelvic Obliquity Kit



Elan Headrest

Compact, lightweight and highly adjustable

Adjustable Headrest Hardware:

Six points of adjustment through pivot ball and
multi-disk locking plates; includes tool-less
adjustment levers

Pads: Pediatric pad options available, Standard
Startex or Infection Control covers; aluminum plates
can be formed to shape



INVACARE® MATRX® CUSHIONS



Libra™ Cushion

Width: 14", 15", 16", 17", 18", 19", 20"

Depth: *12", *14", 16", 18", 20", 22"

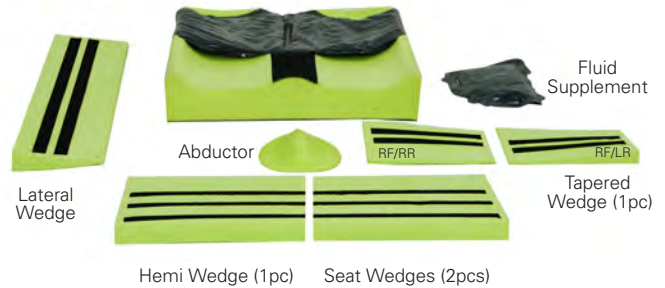
* available for 14" W cushions only

Weight Capacity: 300 lb.

Options: Custom Modifications, Drop Base, Cushion Rigidizer, Pelvic Obliquity Kit

Cover Options: Startex™ (shown), Spacer Mesh, Infection Control (wipeable)

Options: Fit Kit Accessories Custom options available through Motion Concepts



Fit Kit Accessories

Designed to enhance immersion, correct or accommodate orthopedic issues



Vi Cushion

Width: 14", 16", 17", 18", 20"

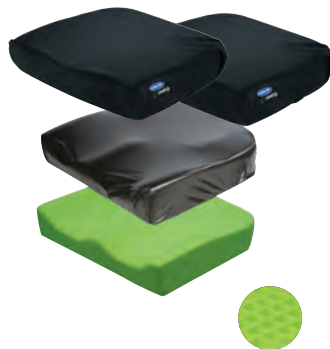
Depth: *15", 16", *17", 18", 20"

* available for 14" W cushions only-

Weight Capacity: 300 lb.

Options: Custom Modifications, Drop Base, Cushion Rigidizer, Pelvic Obliquity Kit

Options: Custom Modifications, Pelvic Obliquity Kit



PS Cushion

Width: 16", 18", 20"

Depth: 16", 18", 20"

Weight Capacity: 300 lb.

Options: Custom Modifications, Cushion Rigidizer, Pelvic Obliquity Kit

INVACARE® MATRX® OPTIONS



Cushion & Cover Modifications - Custom Order

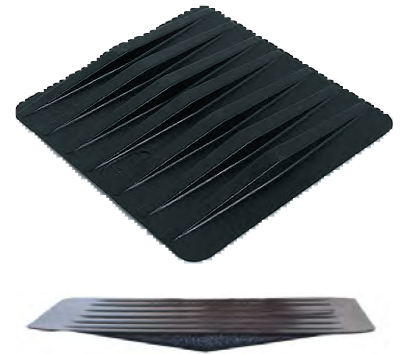
Custom modifications are available to accommodate a variety of orthopedic conditions. Standard modifications include seat width and depth reductions, as well as leg length discrepancies. (Additional lead time required).



Pelvic Obliquity Kit (POK)

Designed to accommodate 0.5" or 1" obliquities. Can be readily modified and installed onto the following cushions:

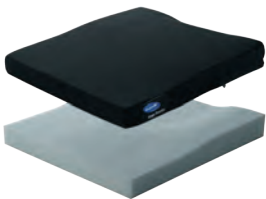
Vi and Kid*ab*ra Vi Cushions; PS Cushions; Flovair Cushions; Stabilite Cushions



Cushion Rigidizers

Lightweight plastic seat insert fits between seat rails for level support and eliminates hammock effect of sling seat upholstery. Securely fitted to bottom of foam cushion inside the cushion cover.

INVACARE® GENERAL USE

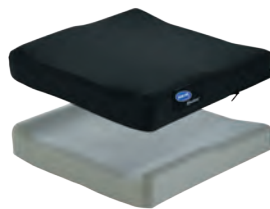


Invacare® Single Density Cushion - Custom Order

Standard Width: 10" - 24"

Standard Depth: 7" - 20"

Weight Capacity: 250 lb.



Invacare® Absolute™ Cushion

Standard Width: 16", 18", 20"

Standard Depth: 16", 18"

Weight Capacity: 250 lb.

Standard

INVACARE® MATRX® BACKS



Elite™ TR Back

Width: 15", 16", 17", 18", 19", 20"

Height: 16", 18", 20"

Weight Capacity: 300 lb.

Contour Depth: 3"

Made with SuperSoft Foam: (Dual layer foam pad with 1" super-soft foam laminated to 1" firm HR foam)

Standard Hardware: Easy Set

Hardware Options: Extended Range Hardware, Split Hardware, Fixed Space Saver*, Heavy-Duty Easy Set



Elite™ Back

Width: 12" - 20"

Height: 10", 12", 14", 16", 18", 20"

Weight Capacity: 300 lb.

Contour Depth: 3"

Standard Hardware: Easy Set

Hardware Options: Extended Range Hardware, Split Hardware, Fixed Space Saver*, Heavy-Duty Easy Set



Elite™ Deep Back

Width: 14" - 20"

Height: 10", 12", 14", 16", 18", 20"

Weight Capacity: 300 lb.

Contour Depth: 6"

Standard Hardware: Easy Set

Hardware Options: Extended Range Hardware, Split Hardware, Fixed Space Saver*, Heavy-Duty Easy Set



PB Back

Width: 14", 16", 17", 18", 20"

Height: 12", 16", 20"

Weight Capacity: 300 lb.

Contour Depth: 5"

Standard Hardware: Easy Set

Hardware Options: Extended Range Hardware, Split Hardware, Fixed Space Saver*, Heavy-Duty Easy Set



PB Deep Back

Width: 14", 16", 17", 18", 20"

Height: 12", 16", 20"

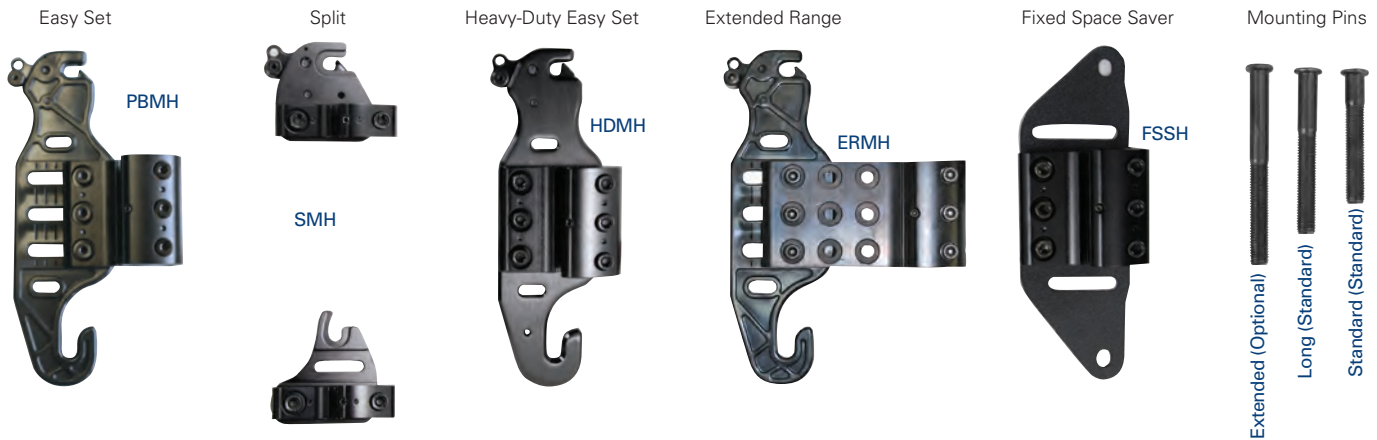
Weight Capacity: 300 lb.

Contour Depth: 7"

Standard Hardware: Easy Set

Hardware Options: Extended Range Hardware, Split Hardware, Fixed Space Saver*, Heavy-Duty Easy Set

INVACARE® MATRX® HARDWARE



Mounting Hardware Options

Easy Set (PBMH)

300 lb. weight capacity. Quick release design for easy removal/portability; Allows back angle/depth adjustment with client seated in wheelchair; Compatible with all models of Elite & PB backs.

Split (SMH)

500 lb. weight capacity. Allows clearance of back cane rigidizer bars or other obstacles.

Heavy-Duty Easy Set (HDMH)

500 lb. weight capacity. Included with all Heavy-Duty Back models; Recommended for users with high tone or heavy intended use.

Fixed Space Saver (FSSH)

500 lb. weight capacity. Recommended for power tilt/recline or tighter width applications. Permanent mount requires tool for removal.

Mounting Pins

Standard/Long Mounting Pins: Included with PB and Elite Backs; allows PB Back to fit 1" narrower to 1" wider and Elite backs the same width or 1" wider wheelchairs.

Optional Extended Mounting Pins (EMP): Allow interface to wheelchairs up to 2" wider. 300 lb. weight capacity maximum.

INVACARE® MATRX® OPTIONS



Super-soft Foam Upgrade

Provides a 1" layer of super-soft foam laminated onto a 1" layer of firmer high resilience foam for increased immersion and added comfort. Available for the following models/sizes:

Invacare Matrix Elite & Elite Deep Backs

Width: 16", 18", 20"

Height: 16", 18", 20"

INVACARE® MATRX® BACK ACCESSORIES



Fixed Laterals

Designed for Invacare Matrix Elite & Elite Heavy-Duty Backs.

Mounting: Installs inside back shell;

Does not compromise depth/angle adjustment

Options: Standard/ Pediatric/Offset (Left or Right)

Sizes:

- Standard 7.5" L x 5" H
- Pediatric 5.5" L x 3" H
- Offset 7.5" L x 5" H



Swing Away Laterals

Designed for Invacare Matrix Elite and Elite Heavy-Duty Backs. Mounting: Installs inside back shell; Does not compromise depth/angle adjustment. Lock/release latch allows pad to swing away for side transfers.

Options: Standard or Offset (Left or Right)

Pad Sizes:

- 4.25" L x 3.25" H
- 5.25" L x 3.5" H
- 5.75" L x 3.75" H
- 6.5" L x 4.25" H

Pediatric



Mini Swing-Away Laterals

Designed for the Invacare Matrix Mini Back. Installs inside back shell; Does not compromise depth/angle adjustment. Lock/release latch allows pad to swing away for side transfers.

Options: Standard only

Pad Size: 4.25" L x 3.25" H



Chest Harness Interface for Mini Backs (HIMINI)

Height adjustable hardware allows attachment of OEM-compliant abdominal supports to the full range of Mini backs.



Chest Harness Interface for Elite Backs (CHIEB)

Width, height and angle adjustable chest harness interface for precise orientation of shoulder straps.



Chest Harness Interface for PB Backs (CHIPB)

Width adjustable chest harness interface for precise orientation of shoulder straps.



Privacy Flaps (PFLAP)

Available for all models of Invacare Matrix PB, Elite shown), and the MX1 backs.

Standard Sizes: XS up to XXL, (fit back widths 13" up to 24")

Note: Flaps over 24" wide are available as special order.



INVACARE® MATRX® ELAN® HEADREST



Elan Headrest Hardware

Compact, lightweight and highly adjustable

Elan Hardware:

Six points of adjustment through pivot ball and multi-disk locking plates, available in standard -15" post or mini -11" post; includes tool-less adjustment levers

Pads: 6 Pad options available; aluminum plates can be formed to shape

Pad Covers:

Standard Startex or Infection Control covers available

 Available only from Motion Concepts



Co-molded Foam



Tool-less Adjustment levers



Ergonomic Knob

Accessories



Standard Pad

Pad Sizes:

- 6" Pad: 6" x 3.5"
- 10" Pad: 10" x 5"
- 14" Pad: 14" x 5"



Occipital Pad

Pad Sizes:

- 9" Pad: 9" x 7"
- 12" Pad: 12" x 8"



4 Point Pad

Pad Size: 11" x 10"

2015 AWARD
HARDING
 INNOVATIVE
 PRODUCT
CMC15
 SEATING, MOBILITY AND MORE

INVACARE® MATRX®

HEAVY-DUTY CUSHIONS



Libra™ Heavy-Duty Cushion

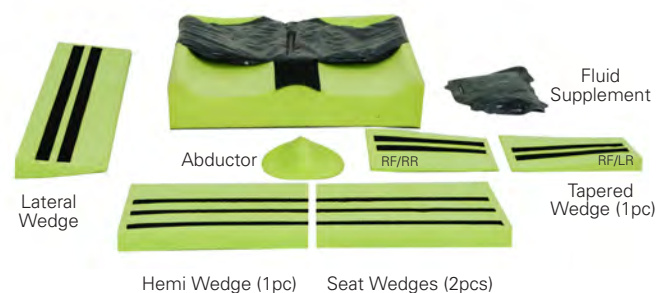
Width: 21", 22", 23", 24"

Depth: 18", 20", 22"

Weight Capacity: 500 lb.

Cover Options: Startex™ (shown), Spacer Mesh, Infection Control (wipeable)

Options: Fit Kit Accessories Custom options available through Motion Concepts



Fit Kit Accessories

Designed to enhance immersion, correct or accommodate orthopedic issues



Vi Heavy-Duty Cushion

Width: 21" - 30"

Depth: 21" - 26"

Weight Capacity: 600 lb.

Options: Custom Modifications, Pelvic Obliquity Kit



PS Heavy-Duty

Width: 21" - 30"

Depth: 18" - 30"

Weight Capacity: 600 lb.

Options: Custom Modifications, Pelvic Obliquity Kit, Cushion Rigidizer

INVACARE® MATRX® HEAVY-DUTY BACKS

Bariatric



Elite™ TR Heavy-Duty Back

Width: 21" - 24"

Height: 20"

Weight Capacity: 500 lb.

Contour Depth: 3"

Made with SuperSoft Foam: (Dual density, 1" firm + 1" soft HR foam combination)

Standard Hardware: Heavy-Duty Easy Set

Hardware Options: Fixed Space Saver*



Heavy-Duty Easy Set Hardware



Super Soft Foam



Elite™ Heavy-Duty Back

Width: 21" - 24"

Height: 16", 20"

Weight Capacity: 500 lb.

Extra Wide PB Heavy-Duty Backs are available up to 30" W x 16" or 20" H

Contour Depth: 5"

Standard Hardware: Heavy-Duty Easy Set

Hardware Options: Fixed Space Saver*



Elite™ Deep Heavy-Duty Back

Width: 21" - 24"

Height: 16", 18", 20"

Weight Capacity: 500 lb.

Contour Depth: 6"

Standard Hardware: Heavy-Duty Easy Set

Hardware Options: Fixed Space Saver*



PB Heavy-Duty Back

Width: 20", 22", 24"

Height: 16", 20"

Weight Capacity: 500 lb.

Extra Wide PB Heavy-Duty Backs are available up to 30" W x 16" or 20" H

Contour Depth: 5"

Standard Hardware: Heavy-Duty Easy Set

Hardware Options: Fixed Space Saver*



PB Deep Heavy-Duty Back

Width: 20", 22", 24"

Height: 16", 20"

Weight Capacity: 500 lb.

Extra Wide PB Deep Heavy-Duty Backs are available up to 30" W x 16" or 20" H

Contour Depth: 7"

Standard Hardware: Heavy-Duty Easy Set

Hardware Options: Fixed Space Saver*

*Note: This back can be installed on the Invacare® Formula™ CG Tilt/Recline, and Motion Concepts TRx Power Positioning Systems using FSSH

2017 AWARD
HARDING
INNOVATIVE
PRODUCT
GMC17
SEATING, MOBILITY AND MORE



INVACARE® MATRX® MX2 BACK



Matrx MX2 Back

MX2 Back is designed for active users who demand the best. Carbon fiber specially engineered to provide unmatched stability for peak performance. Contoured to provide hip/trunk stability and enhance upper extremity mobility and function. Very light weight and aesthetically appealing.

Width: 14", 15", 16", 17", 18"

Height: 6", 9", 12", 16"

Weight Capacity: 250 lb.

Contour Depth: 3"

Hardware Options: Fixed Mount & Quick Release



Back Shell

Solid Carbon fiber construction designed to provide optimal flex and suspension. Shaped for perfect fit and maximum stability. Designed with cutouts for breathability and slots for easy height adjustment.



Fixed Mount

Quick Release



Hardware Options

Angle, height, depth, width, rotation adjustable for precise orientation.

Fixed Mount – Lightweight, carbon fiber construction, maximum performance for rigid chairs

Quick Release – Easy removal for portability



Privacy Flaps (PFLAP)

Available for all MX2 back sizes

INVACARE® MATRX® ACCESSORIES



Air Mesh Calf Straps

Available in 4 sizes:
 3.5" H and fits chairs 15" - 18" W
 3.5" H and fits chairs 18" - 22" W
 9" H and fits chairs 15" - 18" W
 9" H and fits chairs 18" - 22" W



Padded Lap Belts

Available in 2 and 4 Point; Central pull, push release bottom; fits hip widths 13" - 19" W



Ergonomic Arm Trough

Molded, ergonomic shape fits the natural arm curve; provides users flexibility of various arm positions Available for left or right side and is 13" x 4.5"; hand pad is optional add-on and is also available for left or right side and is 5" x 4.5"



Modular Arm Pads

Durable composite frame features 3 slots for infinite fore and aft adjustability as well as offset mounting.

Available for left or right side and in 2 sizes:

- Full length: 14" x 4"
- Desk length: 10" x 4"

Available in 2 interchangeable foam inserts:
 Visco Foam/Startex and Integral Foam



Gel Arm Pads

Available for left or right side and in 3 sizes:

- Narrow: 12" x 2"
- Wide: 12" x 3"
- Long: 14" x 3.5"



Multi-Axis Armrest Mount

Allows infinite adjustability of angle and rotation of arm pad or Multi-position arm pads or Arm Trough.



Invacare® Drop Base

Provides stable support base for the cushion.
 Three sizes for wheelchairs from 14" - 22" W

Accessories

| Cushions | Absolute | Single Density | PS Pediatric | PS Cushion | PS Heavy-Duty | Kid*ab*ra-Vi | Vi | Vi Heavy-Duty |
|------------------------|---------------|----------------|---|---------------|---------------|--------------|--------------------|---------------|
| | STANDARD | STANDARD | PEDIATRIC | STANDARD | BARIATRIC | PEDIATRIC | STANDARD | BARIATRIC |
| Model | ECwd | SDwd | PSwwdd | PSwwdd | PSwwdd | KAwwdd-Vi | MAwwdd-Vi | MAwwdd-Vi |
| Width | 16", 18", 20" | 10" - 24" | 10" - 14" | 16", 18", 20" | 21" - 30" | 12", 14" | 14", 16", 18", 20" | 21" - 30" |
| Depth | 16", 18" | 7" - 20" | 10", 12", 14", 16" | 16", 18", 20" | 18" - 30" | 12", 14" | 16", 18", 20" | 18" - 30" |
| Weight Capacity | 250 lb. | 250 lb. | 150 lb. | 300 lb. | 600 lb | 150 lb. | 300 lb. | 600 lb |
| Cover Options | | | Kid*a*bra, Pink Lollipop, Blizzard Blue | | | Meshtex | | |

| Backs | Mini | Elite | Elite Heavy-Duty | Elite TR | Elite TR Heavy-Duty | Elite Deep | Elite Deep Heavy-Duty | PB |
|------------------------------|---------------------|--------------------------------|---------------------------------------|---------------------|---------------------|--------------------------------|-----------------------|---------------------------------|
| | PEDIATRIC | STANDARD | BARIATRIC | STANDARD | BARIATRIC | STANDARD | BARIATRIC | STANDARD |
| Model | MINIwwhh | PBEwwhh | PBEwwhh-HD | PBEwwhh-TR | PBEwwhh-TRHD | EDBwwhh | EDBwwhh-HD | MPBwwhh |
| Width | 10" - 14" | 12" - 20" | 21" - 24" ; 25" - 30" (Extra Wide) | 15" - 20" | 21" - 24" | 14" - 20" | 21" - 24" | 14", 16", 17", 18", 20" |
| Height | 7", 10", 12", 14" | 10", 12", 14" 16", 18", 20" | 16", 20" | 16", 18", 20" | 20" | 10", 12", 14" 16", 18", 20" | 16", 18", 20" | 12", 16", 20" |
| Contour Depth | 3" | 3" | 3" | 3" | 3" | 6" | 6" | 5" |
| Weight Capacity | 150 lb. | 300 lb. | 500 lb. | 300 lb. | 500 lb. | 300 lb. | 500 lb. | 300 lb. |
| Std. Cover | Kid*a*bra | Meshtex | Meshtex | Meshtex | Meshtex | Meshtex | Meshtex | Meshtex |
| Fits onto Back Canes: | Fits up to 1" wider | Fits up to 1" wider | Fits up to 1" wider | Fits up to 1" wider | Fits up to 1" wider | Fits up to 1" wider | Fits up to 1" wider | Fits 1" narrower up to 1" wider |

**This information is not intended to be, nor should it be considered billing or legal advice. Providers are responsible for determining the appropriate billing codes when submitting claims to the Medicare Program and should consult an attorney or other advisor to discuss specific situations in further detail.*

| Libra | Libra Heavy-Duty |
|---|---|
| STANDARD | BARIATRIC |
| LCwwdd | LCwwdd |
| 14" - 20" | 21", 22", 23", 24" |
| 12", 14", 16", 18", 20", 22" | 18", 20", 22" |
| 300 lb. | 500 lb. |
| Spacetex (-SP), Infection Control (-IC)** | Spacetex (-SP), Infection Control (-IC)** |

| PB Heavy-Duty | PB Deep | PB Deep Heavy-Duty | MX2 Fixed | MX2 Quick Release |
|----------------------|---------------------------------|---------------------------|---------------------------------|---------------------------------|
| BARIATRIC | STANDARD | BARIATRIC | STANDARD | STANDARD |
| HDBwwhh | PBDwwhh | DHDwwhh | IMX2wwhh-CFH | IMX2wwhh-QRH |
| 20" - 30" † | 14", 16", 17", 18", 20" | 20" - 30" † | 14" - 18" | 14" - 18" |
| 16", 20" | 12", 16", 20" | 16", 20" | 6", 9", 12", 16" | 6", 9", 12", 16" |
| 5" | 7" | 7" | 3" | 3" |
| 500 lb. | 300 lb. | 500 lb. | 250 lb. | 250 lb. |
| Meshtex | Meshtex | Meshtex | Spacetex / Onyx Vinyl | Spacetex / Onyx Vinyl |
| Fits up to 1" wider | Fits 1" narrower up to 1" wider | Fits up to 1" wider | Fits 1" narrower up to 1" wider | Fits 1" narrower up to 1" wider |

E: info@dejay.com.au

P: 02 9838 8869

W: www.dejay.com.au

